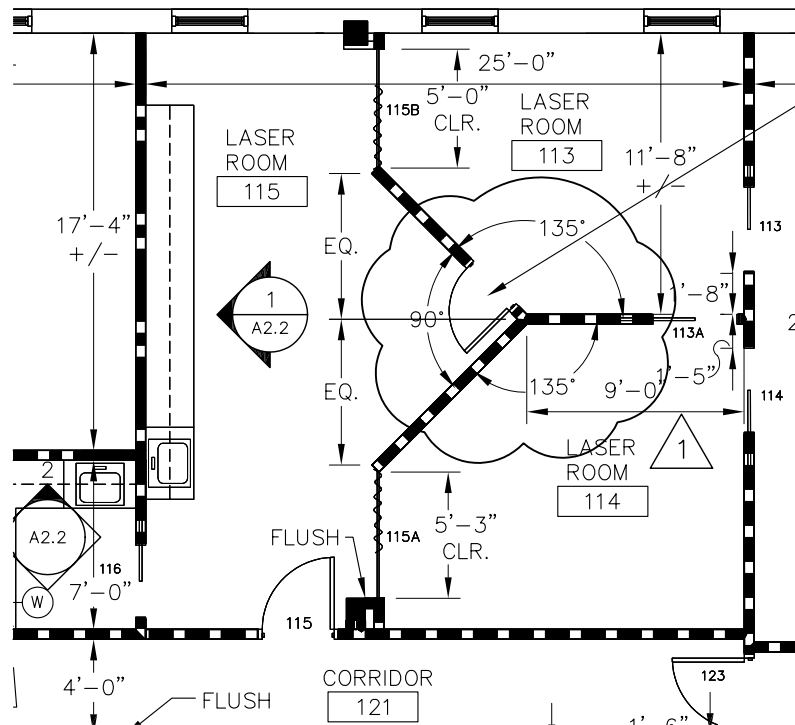


BULLETIN # 1

THE FOLLOWING CHANGES SHALL BECOME A PART OF THE CONTRACT AND SHALL SUPERSEDE ANYTHING CALLED FOR PREVIOUSLY IN THE SPECIFICATIONS OR SHOWN ON THE CONTRACT DRAWINGS WITH WHICH THEY MAY BE AT VARIANCE. THIS BULLETIN SHALL BE A PART OF AN ATTACHED TO THE SPECIFICATIONS.



MEYER
INTERIORS • ARCHITECTURE
MEYER DESIGN INC. • MEYER ARCHITECTS, INC.
 227 WEST WASHINGTON AVENUE, PHILADELPHIA, PA 19106-3204
 VOICE • 610.648.8500 FAX • 610.648.8509
 835 NORTH TATNALL STREET, WILMINGTON, DE 19801
 VOICE • 302.575.1700 FAX • 302.575.1606
 E-MAIL • info@meyer-associates.com
 © 2006 MEYER DESIGN, INC. MEYER ARCHITECTS, INC. ALL RIGHTS RESERVED.

KREMER LASER EYE CENTER
 200 MALL BLVD
 KING OF PRUSSIA, PA
 19406

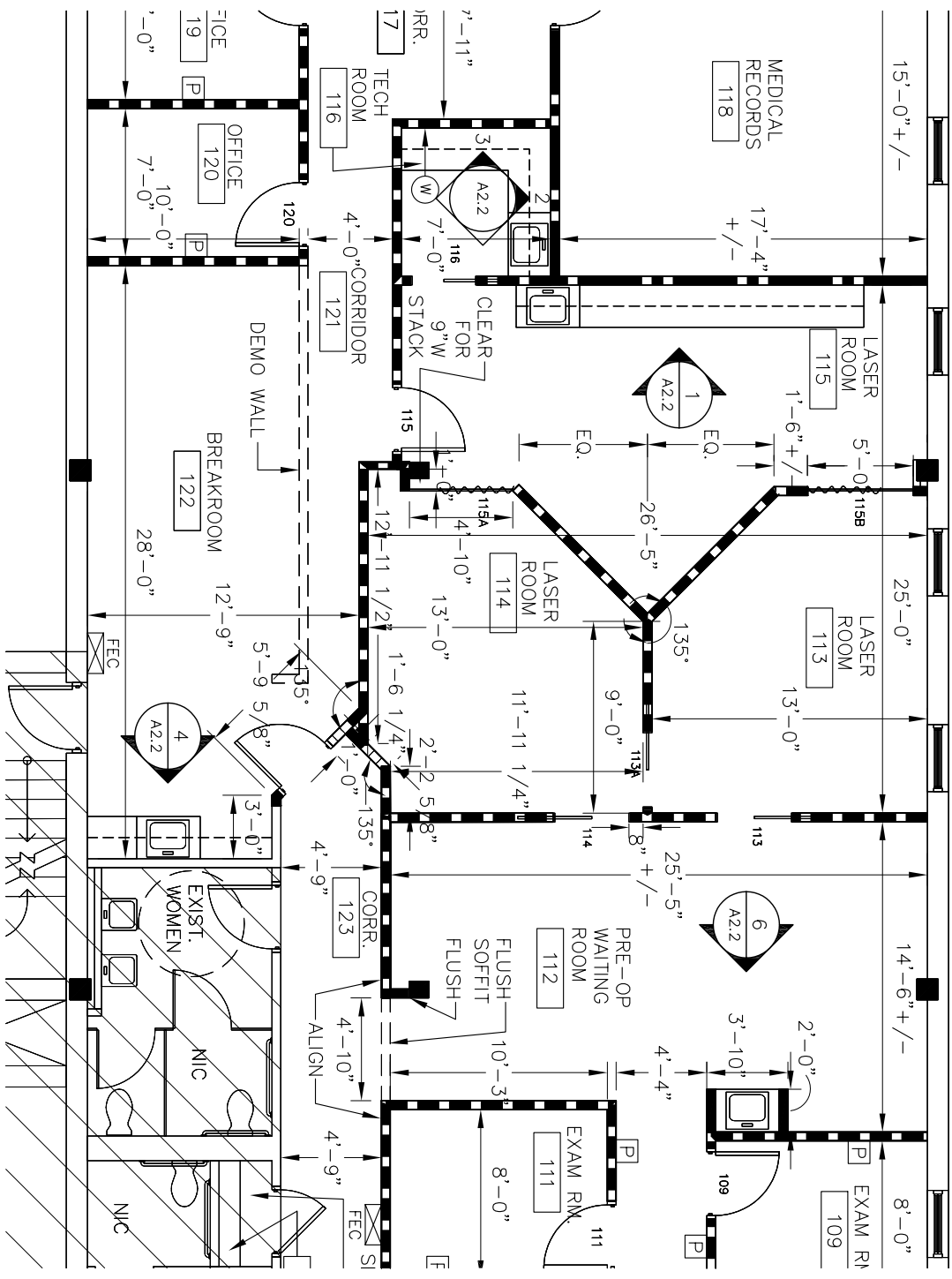
DRAWING TITLE
CONST PLAN
(REV 1)
RM'S 113 + 115

SCALE: 1/8" = 1'-0"
 DATE: 10/6/06
 JOB. NO.: 06097
 BY: SBP

DRAWING NO.
CSK-1

BULLETIN # 2

THE FOLLOWING CHANGES SHALL BECOME A PART OF THE CONTRACT AND SHALL SUPERSEDE ANYTHING CALLED FOR PREVIOUSLY IN THE SPECIFICATIONS OR SHOWN ON THE CONTRACT DRAWINGS WITH WHICH THEY MAY BE AT VARIANCE. THIS BULLETIN SHALL BE A PART OF AN ATTACHED TO THE SPECIFICATIONS.



MEYER
INTERIORS • ARCHITECTURE
MEYER DESIGN, INC. • MEYER ARCHITECTS, INC.
 227 EAST LANCASTER AVENUE, ARDMORE, PA 19003-2304
 VOICE • 610.649.8500 FAX • 610.649.8509
 835 NORTH TATNALL SREET, WILMINGTON, DE 19801
 VOICE • 302.575.1700 FAX • 302.575.1606
 E-MAIL • info @ meyer-associates.com

© 2006 MEYER DESIGN, INC. MEYER ARCHITECTS, INC. ALL RIGHTS RESERVED.

KREMER LASER EYE CENTER

200 MALL BLVD
 KING OF PRUSSIA, PA
 19406

DRAWING TITLE

CONST PLAN
 (REV 1)
RMS 113 + 115

SCALE: 1/8" = 1'-0"

DATE: 10/16/06

JOB NO.: 06097

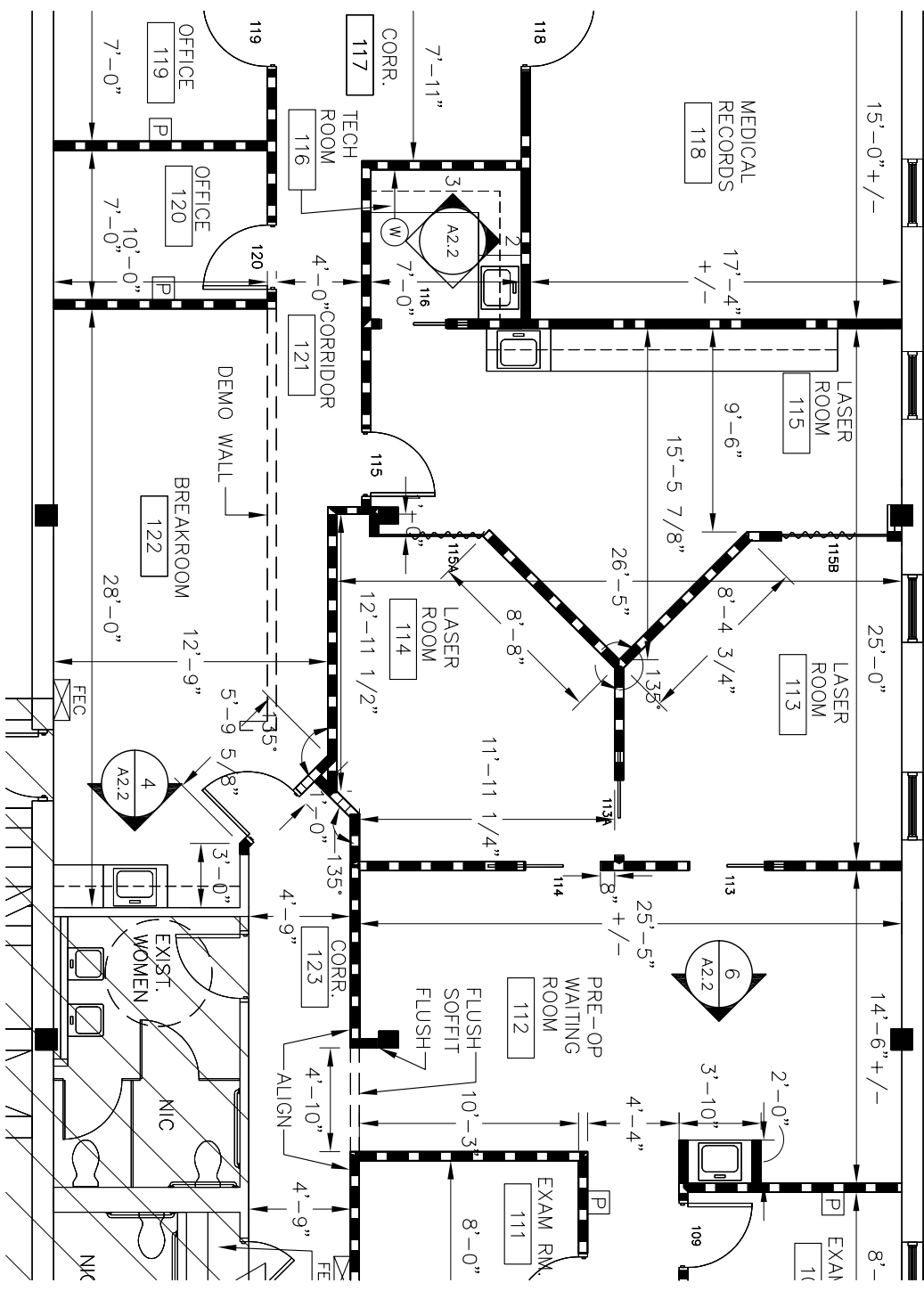
BY: DEB

DRAWING NO.

CSK-2 (R)

BULLETIN # 2

THE FOLLOWING CHANGES SHALL BECOME A PART OF THE CONTRACT AND SHALL SUPERSEDE ANYTHING CALLED FOR PREVIOUSLY IN THE SPECIFICATIONS OR SHOWN ON THE CONTRACT DRAWINGS WITH WHICH THEY MAY BE AT VARIANCE. THIS BULLETIN SHALL BE A PART OF AN ATTACHED TO THE SPECIFICATIONS.



DRAWING TITLE
CONST PLAN
 (REV 1)
RMS 113 + 115

SCALE: 1/8" = 1'-0"
 DATE: 10/16/06
 JOB NO.: 06097
 BY: DEB
 DRAWING NO.

CSK-2 (Ra)

KREMER LASER EYE CENTER

200 MALL BLVD
 KING OF PRUSSIA, PA
 19406

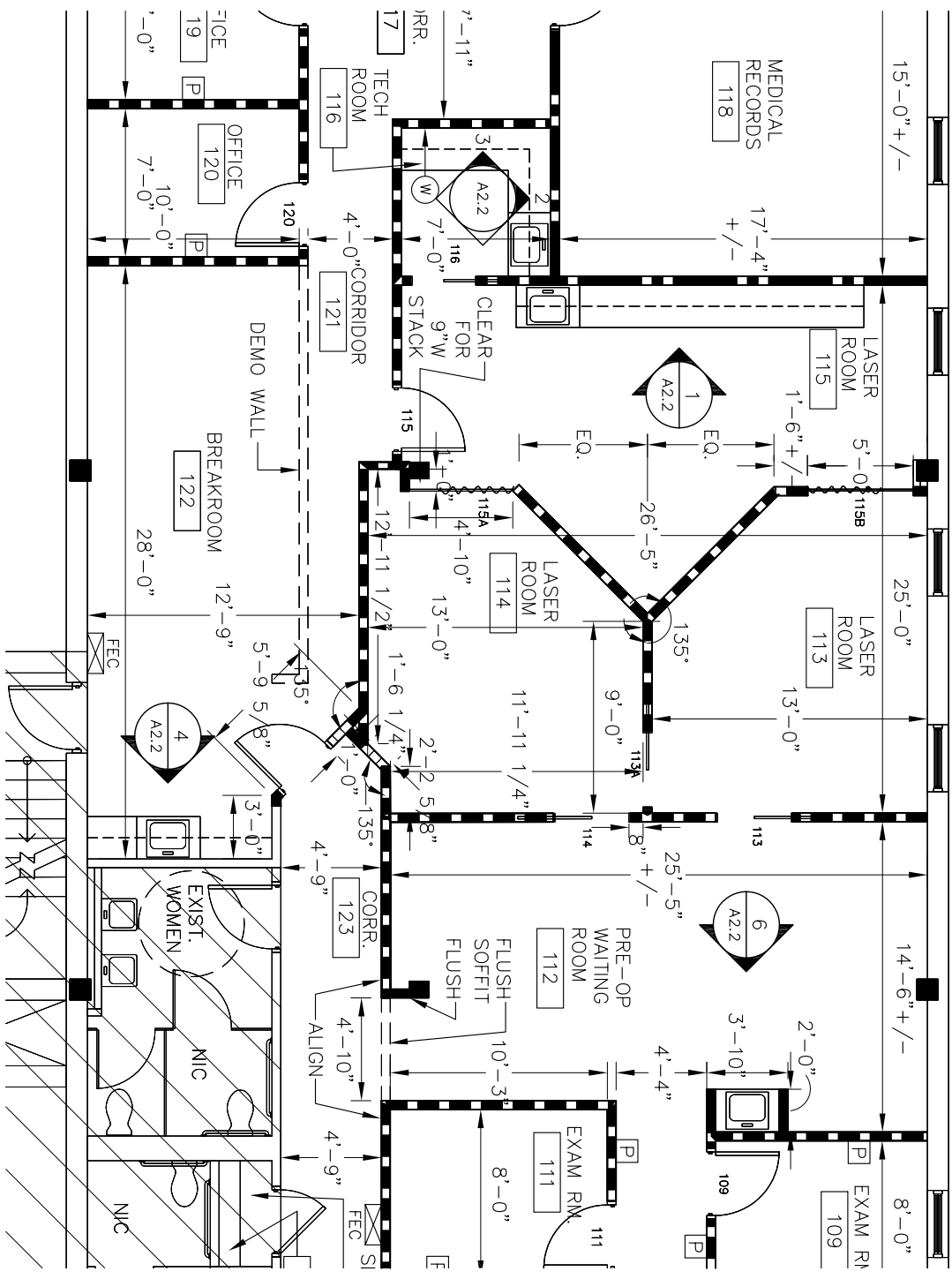
MEYER
 INTERIORS • ARCHITECTURE
 MEYER DESIGN, INC. • MEYER ARCHITECTS, INC.

227 EAST LANCASTER AVENUE, ARDMORE, PA 19003-2304
 VOICE • 610.649.8500 FAX • 610.649.8509
 835 NORTH TATNALL SREET, WILMINGTON, DE 19801
 VOICE • 302.575.1700 FAX • 302.575.1606
 E-MAIL • info @ meyer-associates.com

© 2006 MEYER DESIGN, INC. MEYER ARCHITECTS, INC. ALL RIGHTS RESERVED.

BULLETIN # 2

THE FOLLOWING CHANGES SHALL BECOME A PART OF THE CONTRACT AND SHALL SUPERSEDE ANYTHING CALLED FOR PREVIOUSLY IN THE SPECIFICATIONS OR SHOWN ON THE CONTRACT DRAWINGS WITH WHICH THEY MAY BE AT VARIANCE. THIS BULLETIN SHALL BE A PART OF AN ATTACHED TO THE SPECIFICATIONS.



INTERIORS • ARCHITECTURE
MEYER DESIGN, INC. • MEYER ARCHITECTS, INC.
 227 EAST LANCASTER AVENUE, ARDMORE, PA 19003-2304
 VOICE • 610.649.8500 FAX • 610.649.8509
 835 NORTH TATNALL SREET, WILMINGTON, DE 19801
 VOICE • 302.575.1700 FAX • 302.575.1606
 E-MAIL • info @ meyer-associates.com

© 2006 MEYER DESIGN, INC. MEYER ARCHITECTS, INC. ALL RIGHTS RESERVED.

KREMER LASER EYE CENTER

200 MALL BLVD
 KING OF PRUSSIA, PA
 19406

DRAWING TITLE

CONST PLAN
 (REV 1)
RMS 113 + 115

SCALE: 1/8" = 1'-0"

DATE: 10/16/06

JOB NO.: 06097

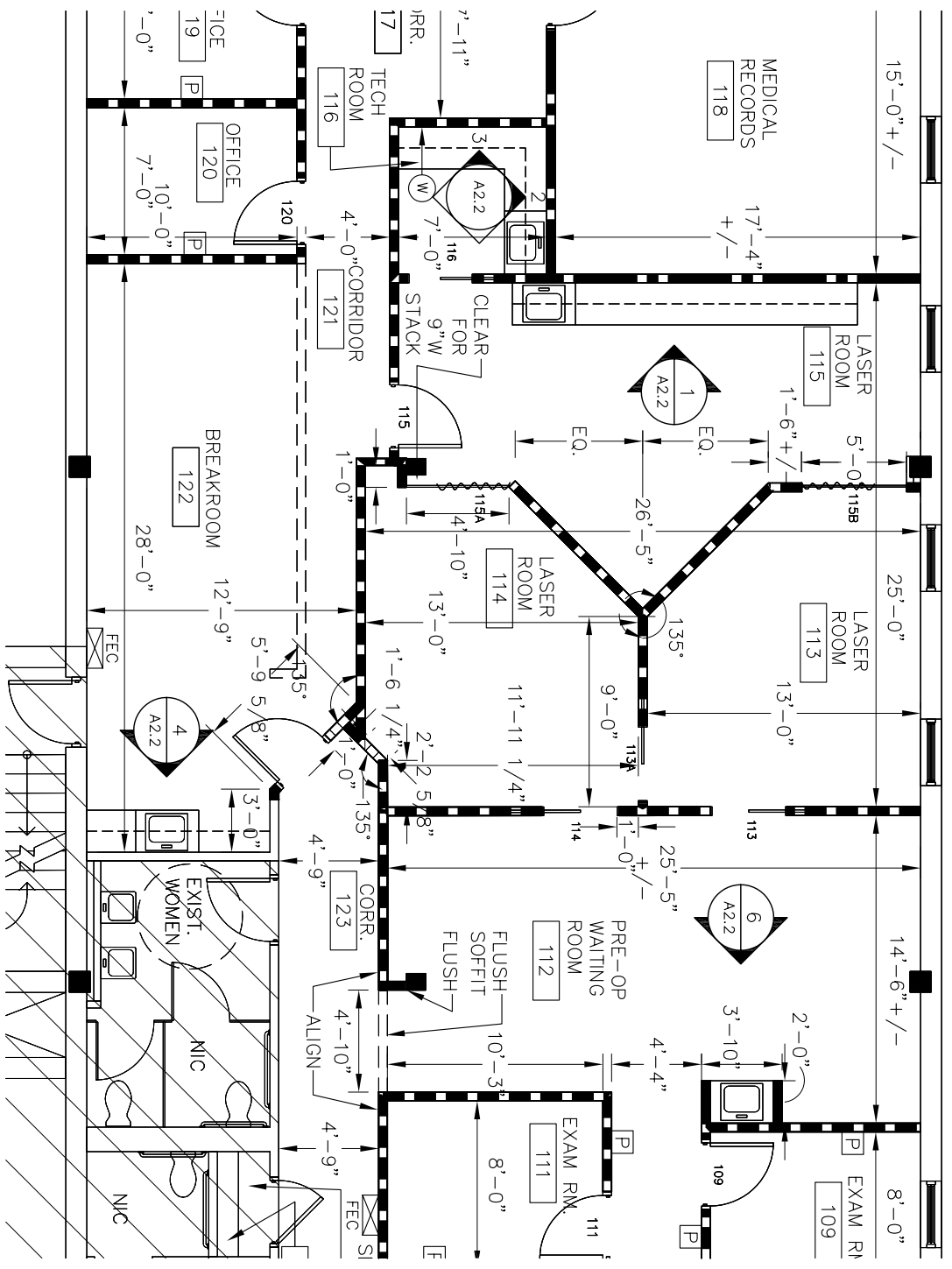
BY: DEB

DRAWING NO.

CSK-2 (R)

BULLETIN # 2

THE FOLLOWING CHANGES SHALL BECOME A PART OF THE CONTRACT AND SHALL SUPERSEDE ANYTHING CALLED FOR PREVIOUSLY IN THE SPECIFICATIONS OR SHOWN ON THE CONTRACT DRAWINGS WITH WHICH THEY MAY BE AT VARIANCE. THIS BULLETIN SHALL BE A PART OF AN ATTACHED TO THE SPECIFICATIONS.



MEYER
 INTERIORS • ARCHITECTURE
 MEYER DESIGN, INC. • MEYER ARCHITECTS, INC.
 227 EAST LANCASTER AVENUE, ARDMORE, PA 19003-2304
 VOICE • 610.649.8500 FAX • 610.649.8509
 835 NORTH TATNALL SREET, WILMINGTON, DE 19801
 VOICE • 302.575.1700 FAX • 302.575.1606
 E-MAIL • info @ meyer-associates.com

© 2006 MEYER DESIGN, INC. MEYER ARCHITECTS, INC. ALL RIGHTS RESERVED.

KREMER LASER EYE CENTER

200 MALL BLVD
 KING OF PRUSSIA, PA
 19406

DRAWING TITLE

CONST PLAN
 (REV 1)
 RMS 113 + 115

SCALE: 1/8" = 1'-0"

DATE: 10/16/06

JOB NO.: 06097

BY: DEB

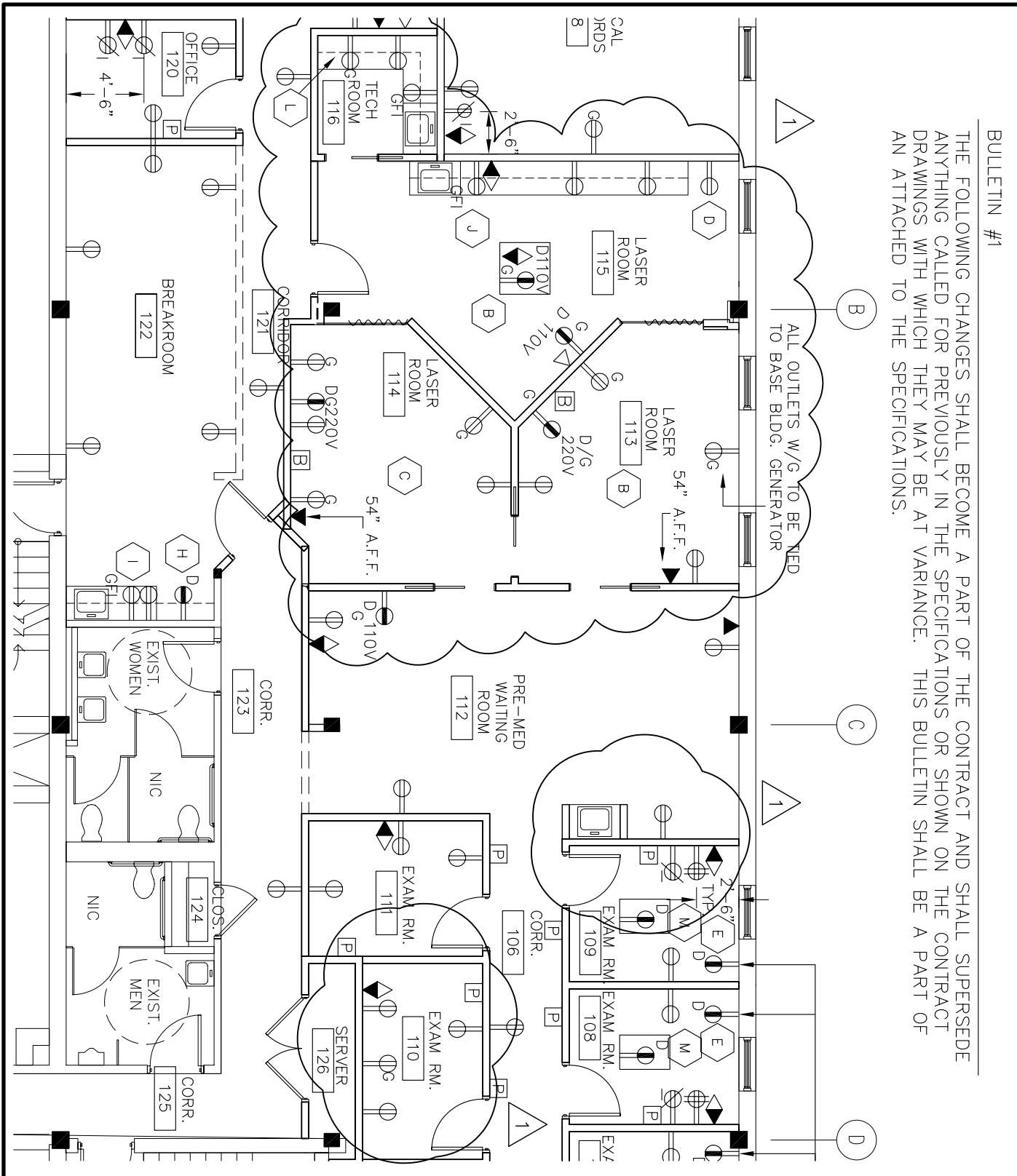
DRAWING NO.

CSK-2

BULLETIN #1

THE FOLLOWING CHANGES SHALL BECOME A PART OF THE CONTRACT AND SHALL SUPERSEDE ANYTHING CALLED FOR PREVIOUSLY IN THE SPECIFICATIONS OR SHOWN ON THE CONTRACT DRAWINGS WITH WHICH THEY MAY BE AT VARIANCE. THIS BULLETIN SHALL BE A PART OF AN ATTACHED TO THE SPECIFICATIONS.

ALL OUTLETS W/G TO BE FED TO BASE BLDG. GENERATOR



MEYER
INTERIORS · ARCHITECTURE
 MEYER DESIGN, INC. • MEYER ARCHITECTS, INC.
 227 EAST LANCASTER AVENUE, ARDMORE, PA 19003-2304
 VOICE • 610.649.8500 FAX • 610.649.8509
 835 NORTH TATNALL SREET, WILMINGTON, DE 19801
 VOICE • 302.575.1700 FAX • 302.575.1606
 E-MAIL • info@meverassoclates.com

© 2006 MEYER DESIGN, INC. MEYER ARCHITECTS, INC. ALL RIGHTS RESERVED.

KREMER LASER EYE CENTER

200 MALL BLVD
 KING OF PRUSSIA, PA
 19406

DRAWING TITLE
ELECT PLAN
 (REV 1)
RMS 110, 112-116

SCALE: 1/8" = 1'-0"

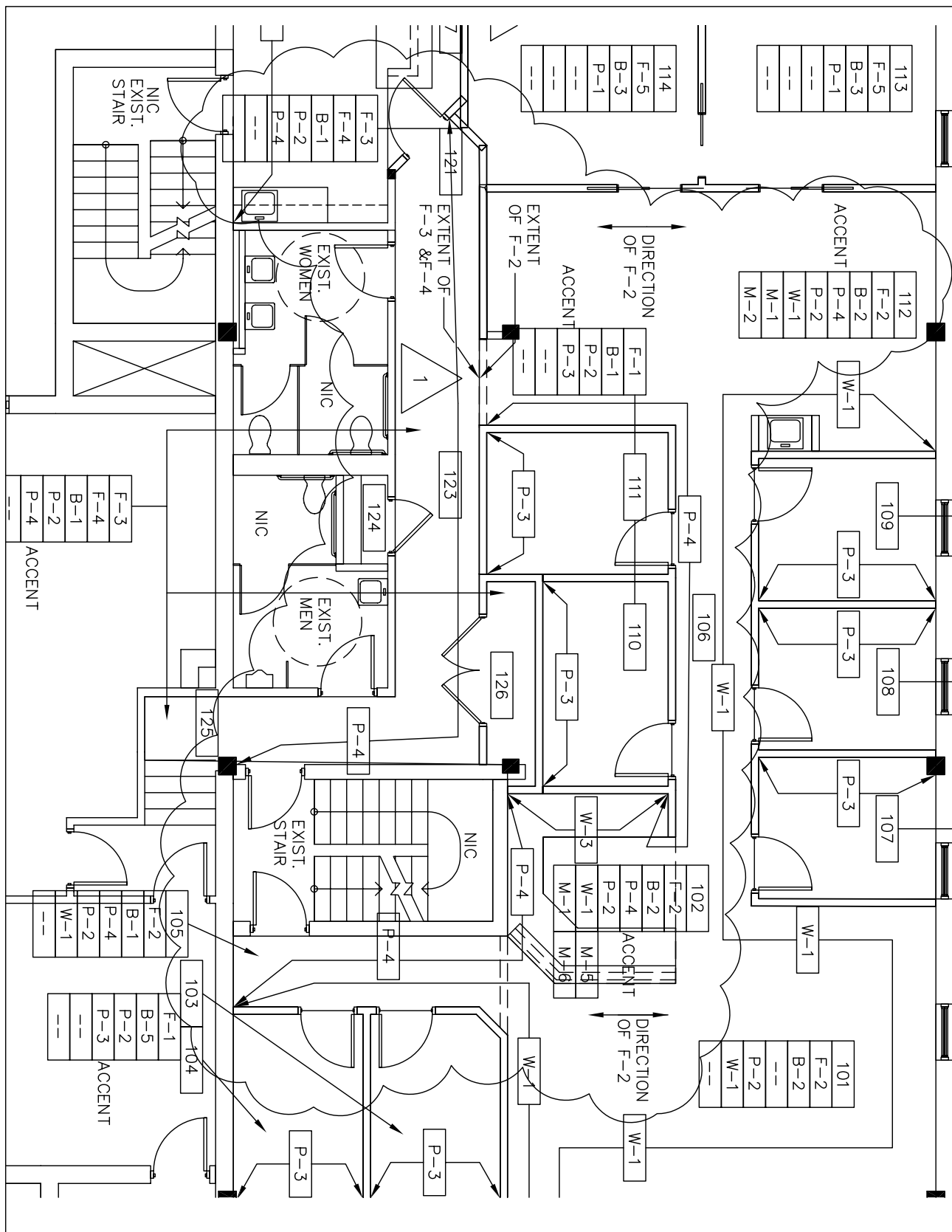
DATE: 10/23/06

JOB. NO.: 06097

BY: SBP

DRAWING NO.
CSK-4

THE FOLLOWING CHANGES SHALL BECOME A PART OF THE CONTRACT AND SHALL SUPERSEDE ANYTHING CALLED FOR PREVIOUSLY IN THE SPECIFICATIONS OR SHOWN ON THE CONTRACT DRAWINGS WITH WHICH THEY MAY BE AT VARIANCE. THIS BULLETIN SHALL BE A PART OF AN ATTACHED TO THE SPECIFICATIONS.



INTERIORS • ARCHITECTURE
MEYER DESIGN, INC. • MEYER ARCHITECTS, INC.
 227 EAST LANCASTER AVENUE, ARDMORE, PA 19003-2304
 VOICE • 610.649.8500 FAX • 610.649.8509
 835 NORTH TATNALL SREET, WILMINGTON, DE 19801
 VOICE • 302.575.1700 FAX • 302.575.1606
 E-MAIL • info @ meyer-associates.com

© 2006 MEYER DESIGN, INC. MEYER ARCHITECTS, INC. ALL RIGHTS RESERVED.

KREMER LASER EYE CENTER

200 MALL BLVD
 KING OF PRUSSIA, PA
 19406

DRAWING TITLE

FINISH PLAN

(REV 1) CORRIDORS:

#106, 113, 115, 117 + 123

SCALE: 1/8" = 1'-0"

DATE: 10/26/06

JOB NO.: 06097

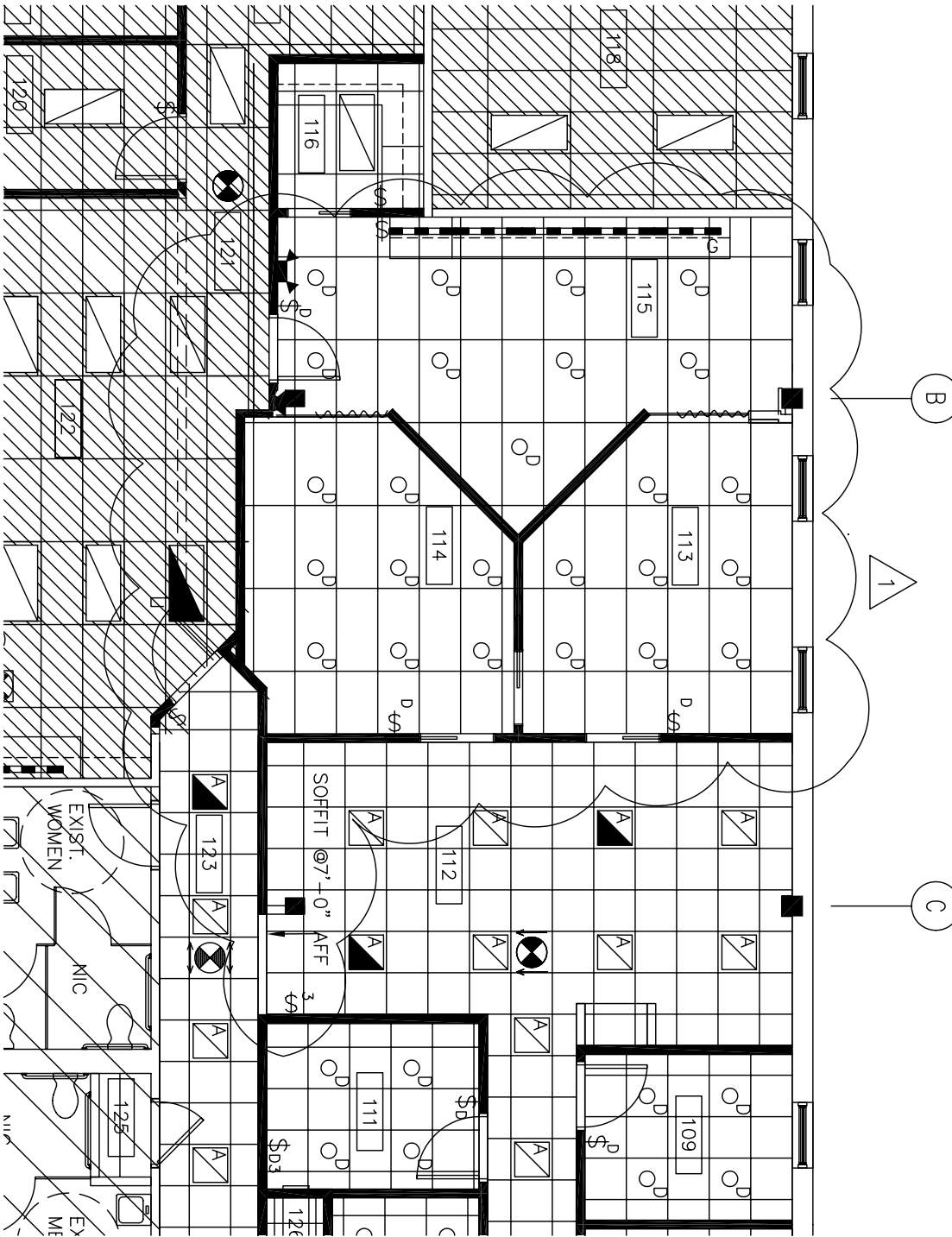
BY: SBP

DRAWING NO.

CSK-5

BULLETIN #3

THE FOLLOWING CHANGES SHALL BECOME A PART OF THE CONTRACT AND SHALL SUPERSEDE ANYTHING CALLED FOR PREVIOUSLY IN THE SPECIFICATIONS OR SHOWN ON THE CONTRACT DRAWINGS WITH WHICH THEY MAY BE AT VARIANCE. THIS BULLETIN SHALL BE A PART OF AN ATTACHED TO THE SPECIFICATIONS.



DRAWING TITLE	RCP
	(REV 1)
	RMS 112-115, 121
SCALE:	1/8" = 1'-0"
DATE:	10/31/06
JOB NO.:	06097
BY:	DEB
DRAWING NO.	CSK-6

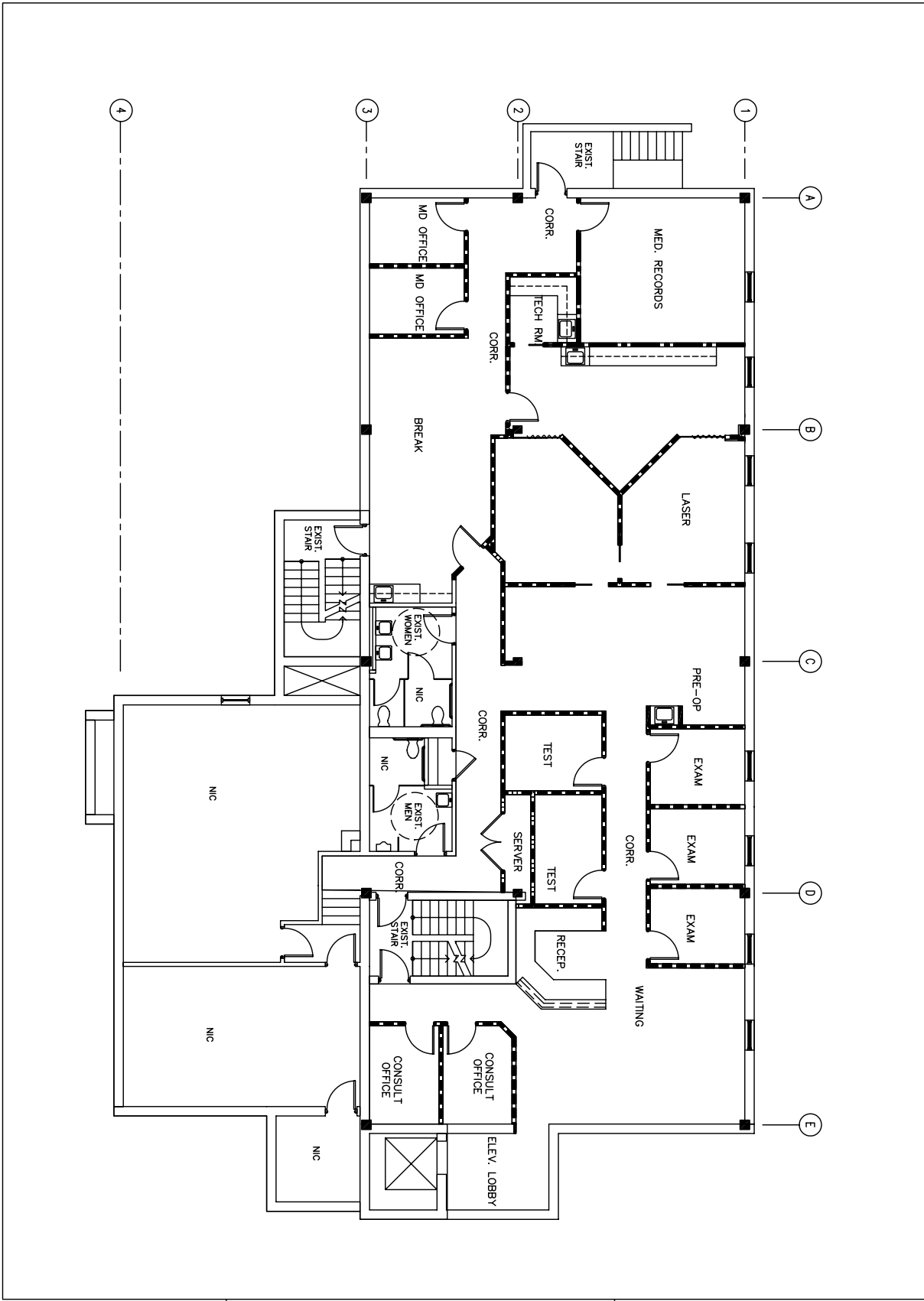
KREMER LASER EYE CENTER
 200 MALL BLVD
 KING OF PRUSSIA, PA
 19406



MEYER
 INTERIORS • ARCHITECTURE
 MEYER DESIGN, INC. • MEYER ARCHITECTS, INC.

227 EAST LANCASTER AVENUE, ARDMORE, PA 19003-2304
 VOICE • 610.649.8500 FAX • 610.649.8509
 835 NORTH TATNALL SREET, WILMINGTON, DE 19801
 VOICE • 302.575.1700 FAX • 302.575.1606
 E-MAIL • info @ meyer-associates.com

© 2006 MEYER DESIGN, INC. MEYER ARCHITECTS, INC. ALL RIGHTS RESERVED.



DRAWING TITLE	
SPACE PLAN	
SCALE:	NTS
DATE:	10/23/06
JOB NO.:	06097
BY:	DEB
DRAWING NO.:	SP

KREMER LASER EYE CENTER
200 MALL BLVD.
 KING OF PRUSSIA

 LOWER LEVEL


MEYER
INTERIORS • ARCHITECTURE
 MEYER DESIGN, INC. • MEYER ARCHITECTS, INC.

227 EAST LANCASTER AVENUE, ARDMORE, PA 19003-2304
 VOICE • 610.649.8500 FAX • 610.649.8509
 835 NORTH TATNALL STREET, WILMINGTON, DE 19801-1746
 VOICE • 302.575.1700 FAX • 302.575.1606
 E-MAIL • info @ meyer-associates.com
 © 2006 MEYER DESIGN, INC. MEYER ARCHITECTS, INC. ALL RIGHTS RESERVED.